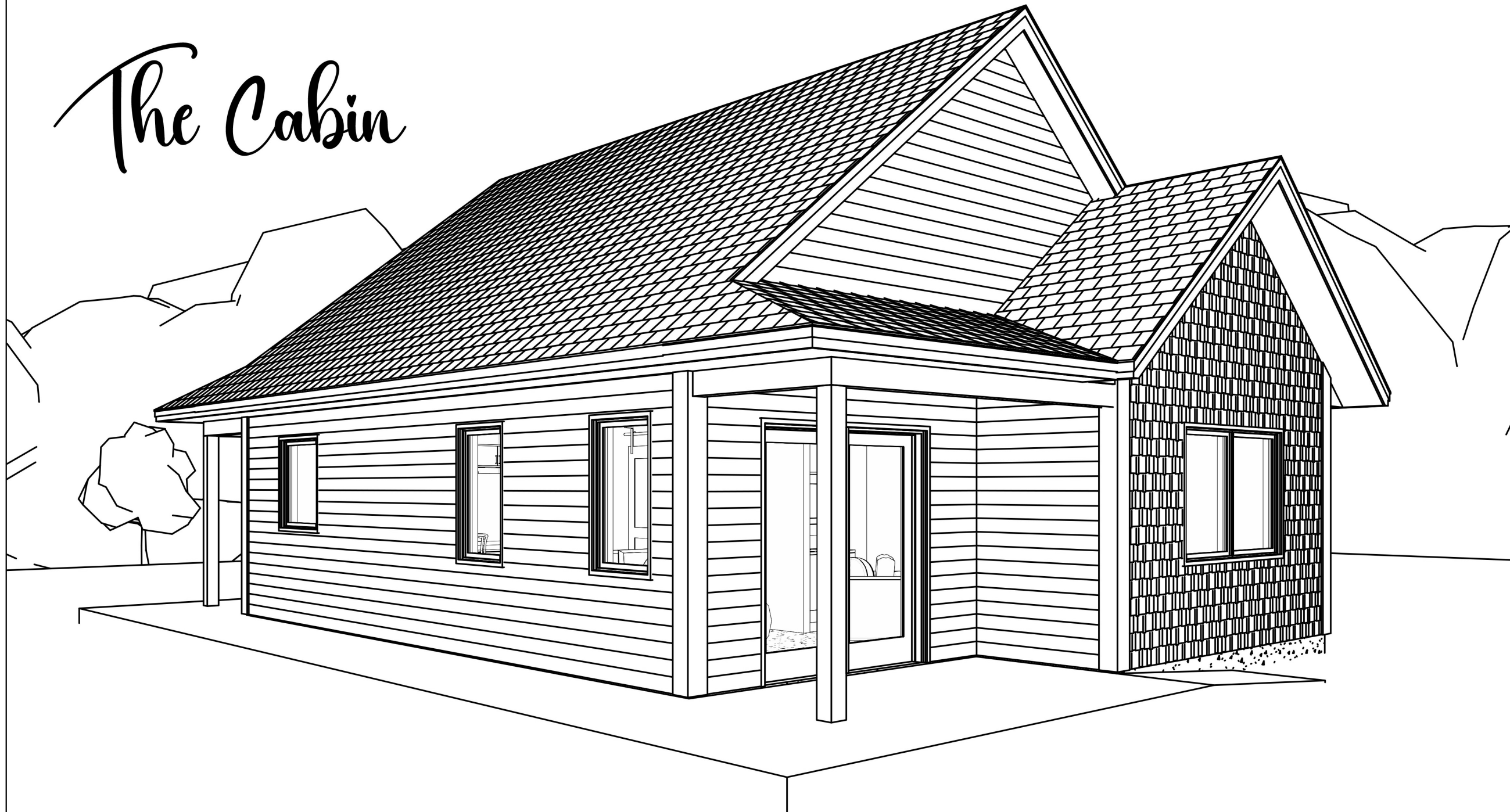


The Cabin



Drawn by Steve Bentley
info@stevebentley.ca
145 Commercial St. Berwick NS
Phone (902) 670-5925
www.stevebentley.ca

General Notes:

All notes, dimensions and site conditions are to be checked and verified by the contractor or builder in charge prior to construction.

All construction shall be carried out in accordance with the current National Building Code of Canada and its authorities having jurisdiction.

Any errors or omissions shall be reported to Steve Bentley prior to construction.

| PAGE NO. | PAGE NAME | SHEET ID# |
|----------|-----------------|-----------|
| 1. | FLOOR PLAN | A100 |
| 2. | FRONT ELEVATION | A200 |
| 3. | REAR ELEVATION | A201 |
| 4. | SIDE ELEVATION | A202 |
| 5. | SIDE ELEVATION | A203 |

CONCEPT PLANS

DO NOT SCALE - NOT FOR CONSTRUCTION
CONTACT STEVE BENTLEY
FOR ERRORS, OMISSIONS OR GENERAL INQUIRIES
(902) 670-5925 info@stevebentley.ca

Grumme Barrier Free Cabin

Cover

Project Revision 1

Date 2025/04/24

Drawn by Steve

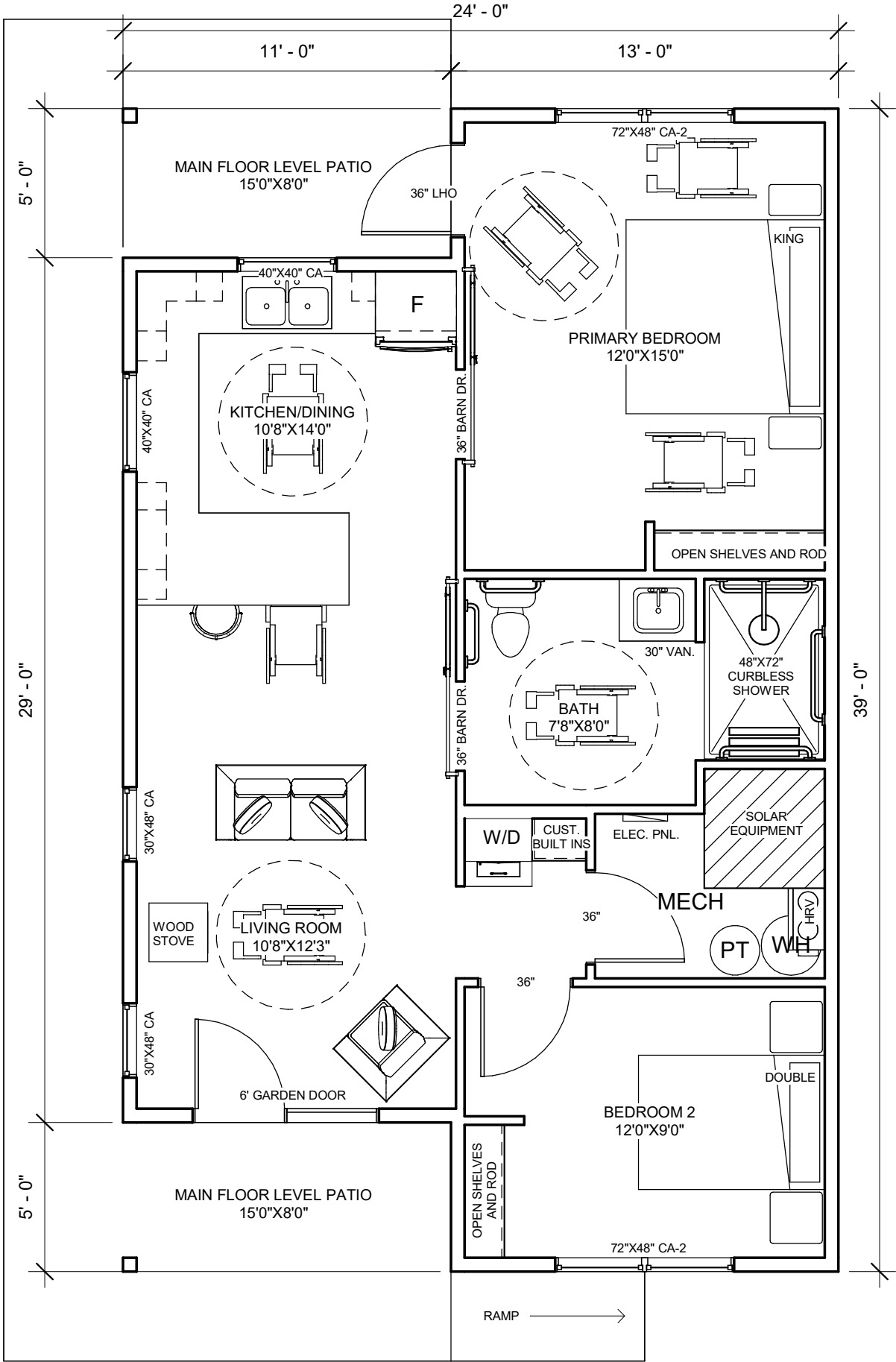
Checked by

A00

Scale

2025-04-24 12:17:03 PM

MAIN LEVEL - 826 SQUARE FEET
8' CEILING



Drawn by Steve Bentley
info@stevebentley.ca
145 Commercial St. Berwick NS
Phone (902) 670-5925
www.stevebentley.ca

General Notes:

All notes, dimensions and site conditions are to be checked and verified by the contractor or builder in charge prior to construction.

All construction shall be carried out in accordance with the current National Building Code of Canada and its authorities having jurisdiction.

Any errors or omissions shall be reported to Steve Bentley prior to construction.



| | |
|---|------------|
| Grumme Barrier Free Cabin Floor Plan | |
| Project Revision | 1 |
| Date | 2025/04/24 |
| Drawn by | Steve |
| Checked by | |
| A100 | |
| Scale | 1 : 55 |



Drawn by Steve Bentley
info@stevebentley.ca
145 Commercial St. Berwick NS
Phone (902) 670-5925
www.stevebentley.ca

General Notes:

All notes, dimensions and site conditions are to be checked and verified by the contractor or builder in charge prior to construction.

All construction shall be carried out in accordance with the current National Building Code of Canada and its authorities having jurisdiction.

Any errors or omissions shall be reported to Steve Bentley prior to construction.

**Grumme
Barrier Free
Cabin**
Front Elevation

Project Revision 1

Date 2025/04/24

Drawn by Steve

Checked by

A200

Scale 1 : 33



Drawn by Steve Bentley
info@stevebentley.ca
145 Commercial St. Berwick NS
Phone (902) 670-5925
www.stevebentley.ca

General Notes:

All notes, dimensions and site conditions are to be checked and verified by the contractor or builder in charge prior to construction.

All construction shall be carried out in accordance with the current National Building Code of Canada and its authorities having jurisdiction.

Any errors or omissions shall be reported to Steve Bentley prior to construction.

**Grumme
Barrier Free
Cabin**

Rear Elevation

Project Revision 1

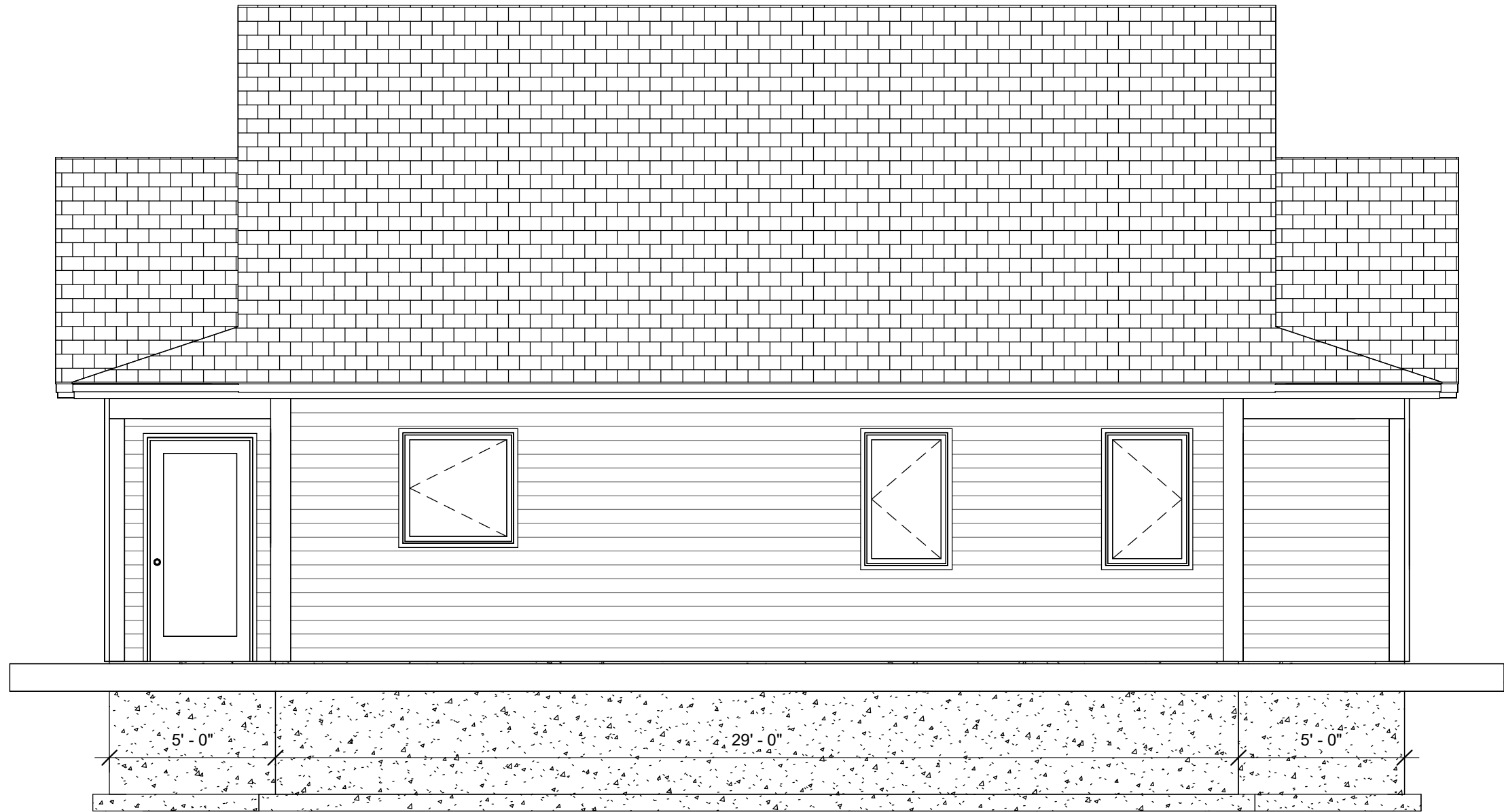
Date 2025/04/24

Drawn by Steve

Checked by

A201

Scale 1 : 33



Drawn by Steve Bentley
info@stevebentley.ca
145 Commercial St. Berwick NS
Phone (902) 670-5925
www.stevebentley.ca

General Notes:

All notes, dimensions and site conditions are to be checked and verified by the contractor or builder in charge prior to construction.

All construction shall be carried out in accordance with the current National Building Code of Canada and its authorities having jurisdiction.

Any errors or omissions shall be reported to Steve Bentley prior to construction.

**Grumme
Barrier Free
Cabin**
Side Elevation

| | |
|------------------|------------|
| Project Revision | 1 |
| Date | 2025/04/24 |
| Drawn by | Steve |
| Checked by | |

A202
Scale 1 : 45



Drawn by Steve Bentley
info@stevebentley.ca
145 Commercial St. Berwick NS
Phone (902) 670-5925
www.stevebentley.ca

General Notes:

All notes, dimensions and site conditions are to be checked and verified by the contractor or builder in charge prior to construction.

All construction shall be carried out in accordance with the current National Building Code of Canada and its authorities having jurisdiction.

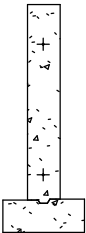
Any errors or omissions shall be reported to Steve Bentley prior to construction.

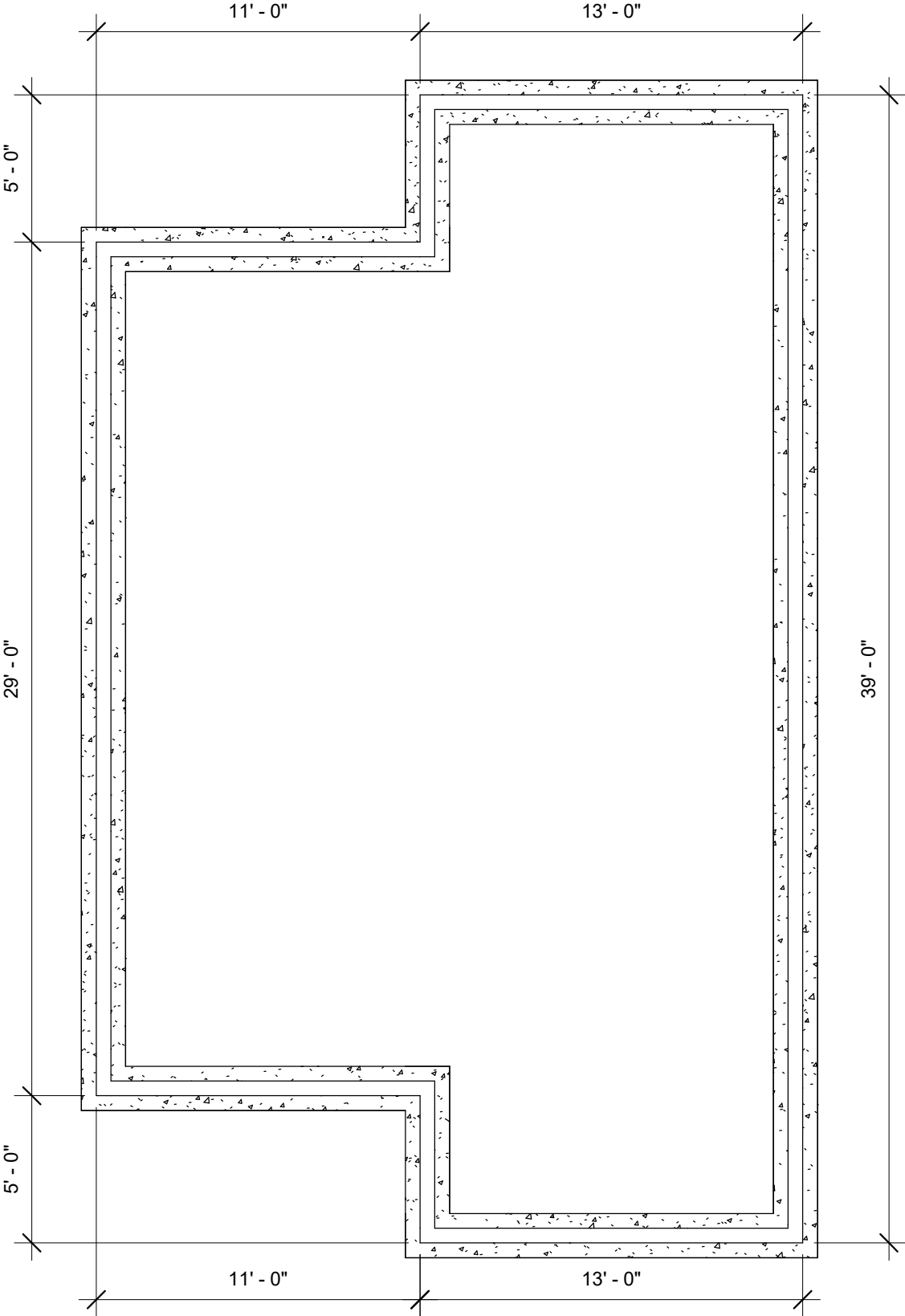


| | |
|---------------------------------|------------|
| Grumme Barrier Free Cabin | |
| Side Elevation | |
| Project Revision | 1 |
| Date | 2025/04/24 |
| Drawn by | Steve |
| Checked by | |
| A203 | |
| Scale | 1 : 45 |

FOUNDATION PLAN

6" FOUNDATION WALL
FOUNDATION WALL TO BE POURED
ON CENTER OF FOOTING. 2 RUNS
OF 10 M REBAR TO RUN HORIZONTALLY
AND CONTINUOUSLY AT 6" FROM BOTTOM
AND TOP OF WALL MINIMUM OF 18"
OVERLAP AT JOINTS.





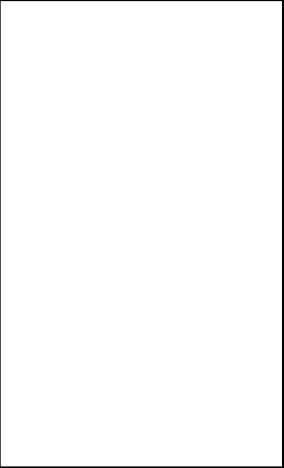
Drawn by Steve Bentley
info@stevebentley.ca
145 Commercial St. Berwick NS
Phone (902) 670-5925
www.stevebentley.ca

General Notes:

All notes, dimensions and site conditions are to be checked and verified by the contractor or builder in charge prior to construction.

All construction shall be carried out in accordance with the current National Building Code of Canada and its authorities having jurisdiction.

Any errors or omissions shall be reported to Steve Bentley prior to construction.



| | |
|---|--------------|
| Grumme Barrier Free Cabin Foundation | |
| Project Revision | 1 |
| Date | 2025/04/24 |
| Drawn by | Steve |
| Checked by | |
| S100 | |
| Scale | As indicated |



The Farmhouse



Drawn by Steve Bentley
info@stevebentley.ca
145 Commercial St. Berwick NS
Phone (902) 670-5925
www.stevebentley.ca

General Notes:

All notes, dimensions and site conditions are to be checked and verified by the contractor or builder in charge prior to construction.

All construction shall be carried out in accordance with the current National Building Code of Canada and its authorities having jurisdiction.

Any errors or omissions shall be reported to Steve Bentley prior to construction.

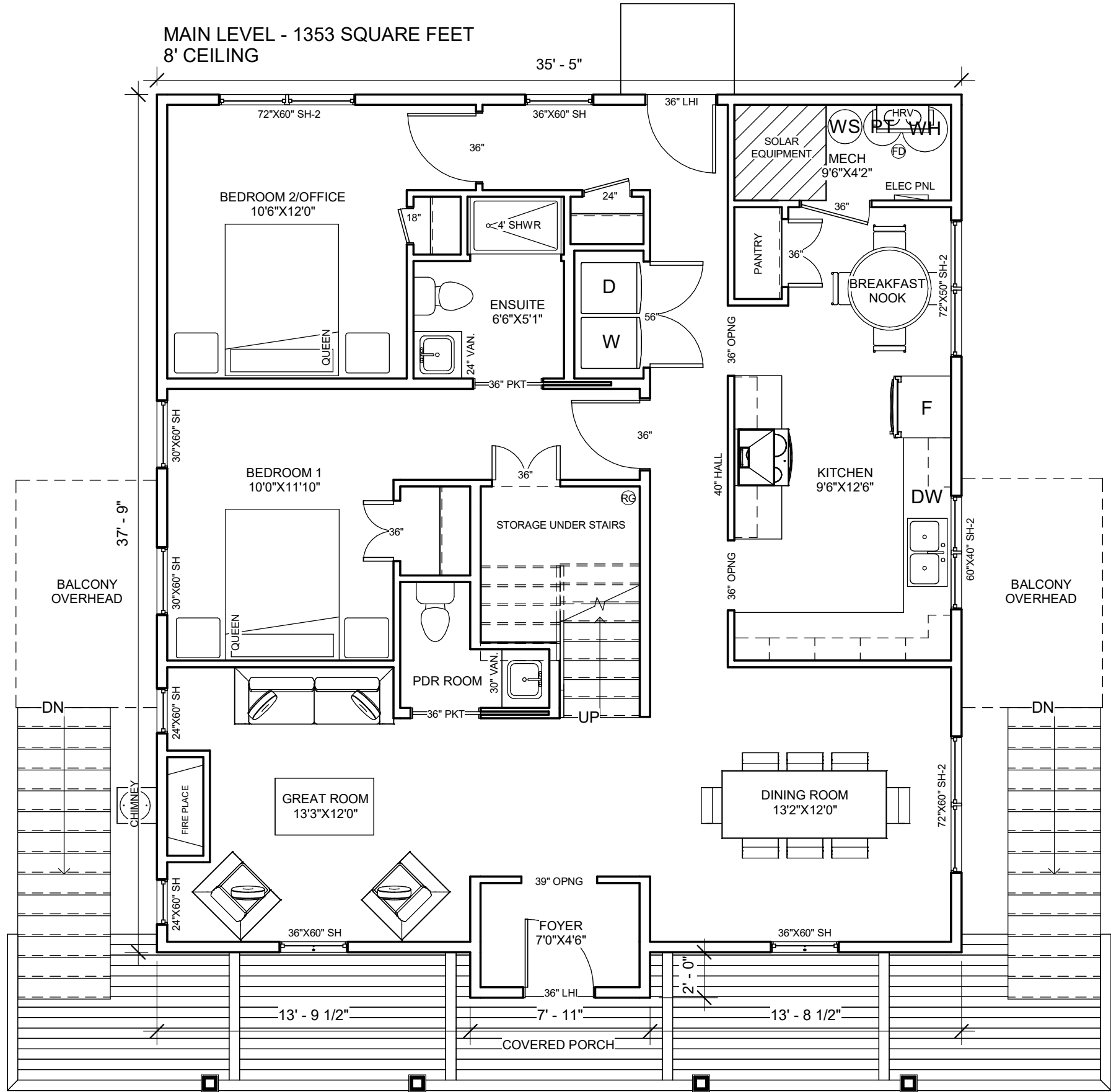
| PAGE NO. | PAGE NAME | SHEET ID# |
|----------|------------------------|-----------|
| 1. | MAIN LEVEL FLOOR PLAN | A100 |
| 2. | UPPER LEVEL FLOOR PLAN | A101 |
| 3. | FRONT ELEVATION | A200 |
| 4. | REAR ELEVATION | A201 |
| 5. | SIDE ELEVATION | A202 |
| 6. | SIDE ELEVATION | A203 |

CONCEPT PLANS

DO NOT SCALE - NOT FOR CONSTRUCTION
CONTACT STEVE BENTLEY
FOR ERRORS, OMISSIONS OR GENERAL INQUIRIES
(902) 670-5925 info@stevebentley.ca

| | |
|------------------|------------|
| Grumme | |
| Farmhouse | |
| Cover | |
| Project Revision | 1 |
| Date | 2025/04/23 |
| Drawn by | Steve |
| Checked by | |
| A00 | |
| Scale | |

2025-04-24 11:20:59 AM



Drawn by Steve Bentley
info@stevebentley.ca
145 Commercial St. Berwick NS
Phone (902) 670-5925
www.stevebentley.ca

General Notes:

All notes, dimensions and site conditions are to be checked and verified by the contractor or builder in charge prior to construction.

All construction shall be carried out in accordance with the current National Building Code of Canada and its authorities having jurisdiction.

Any errors or omissions shall be reported to Steve Bentley prior to construction.

Grumme

Farmhouse

Floor Plan

Project Revision 1

Date 2025/04/23

Drawn by Steve

Checked by

A100

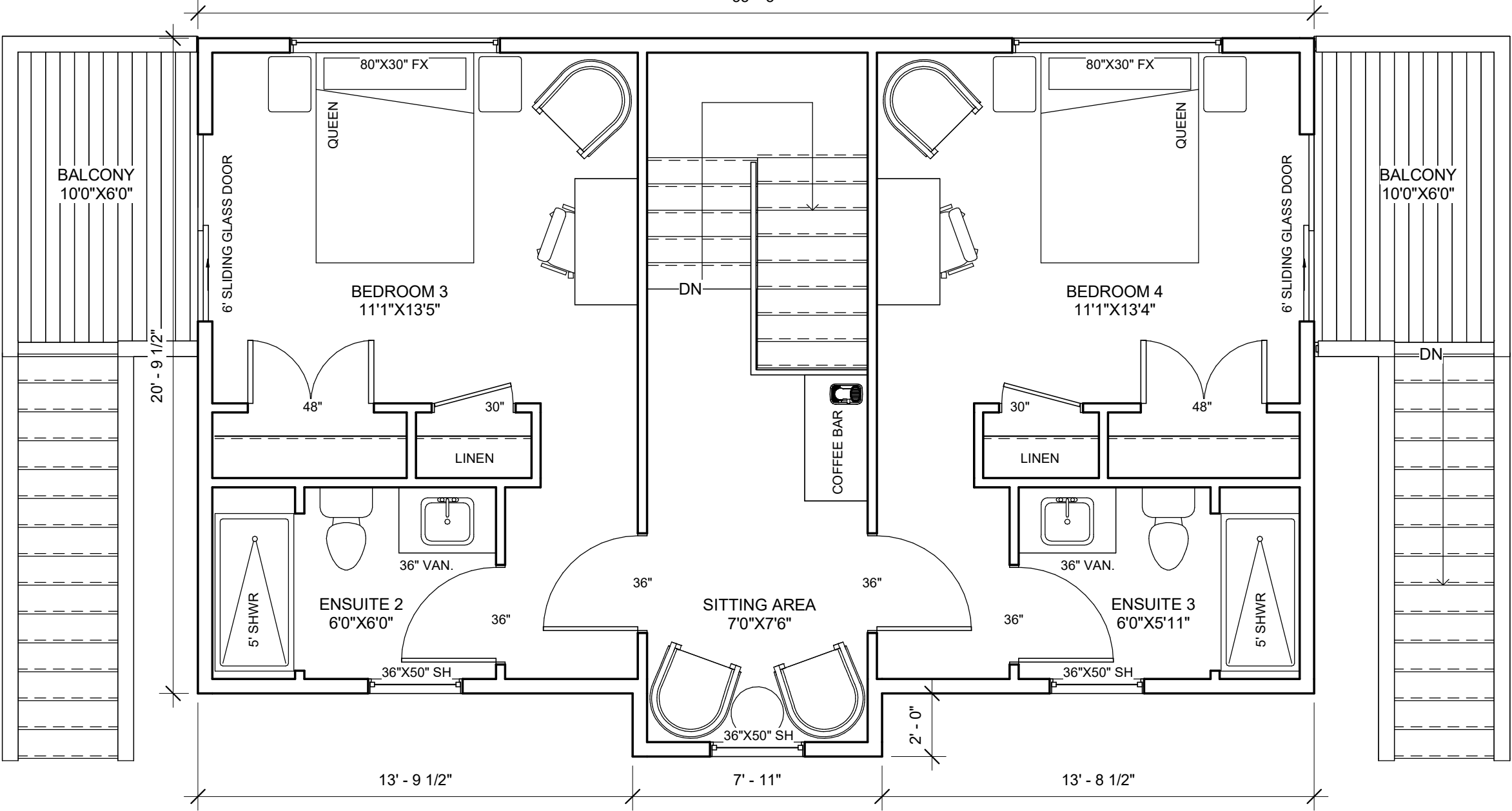
Scale 1 : 60

2025-04-24 11:21:00 AM

UPPER LEVEL FLOOR PLAN

TOTAL UPPER LEVEL = 688 SF
UPPER LEVEL CEILING HEIGHT - 8'

35' - 5"



Drawn by Steve Bentley
info@stevebentley.ca
145 Commercial St. Berwick NS
Phone (902) 670-5925
www.stevebentley.ca

General Notes:
All notes, dimensions and site conditions are to be checked and verified by the contractor or builder in charge prior to construction.
All construction shall be carried out in accordance with the current National Building Code of Canada and its authorities having jurisdiction.
Any errors or omissions shall be reported to Steve Bentley prior to construction.



| | |
|------------------|------------|
| Grumme | |
| Farmhouse | |
| Upper Floor Plan | |
| Project Revision | 1 |
| Date | 2025/04/23 |
| Drawn by | Steve |
| Checked by | |
| A101 | |
| Scale | 1 : 45 |



Drawn by Steve Bentley
info@stevebentley.ca
145 Commercial St. Berwick NS
Phone (902) 670-5925
www.stevebentley.ca

General Notes:

All notes, dimensions and site conditions are to be checked and verified by the contractor or builder in charge prior to construction.

All construction shall be carried out in accordance with the current National Building Code of Canada and its authorities having jurisdiction.

Any errors or omissions shall be reported to Steve Bentley prior to construction.

Grumme

Farmhouse

Front Elevation

Project Revision 1

Date 2025/04/23

Drawn by Steve

Checked by

A200

Scale 1 : 47

2025-04-24 11:21:00 AM



Drawn by Steve Bentley
info@stevebentley.ca
145 Commercial St. Berwick NS
Phone (902) 670-5925
www.stevebentley.ca

General Notes:

All notes, dimensions and site conditions are to be checked and verified by the contractor or builder in charge prior to construction.

All construction shall be carried out in accordance with the current National Building Code of Canada and its authorities having jurisdiction.

Any errors or omissions shall be reported to Steve Bentley prior to construction.

| | |
|------------------|------------|
| Grumme | |
| Farmhouse | |
| Rear Elevation | |
| Project Revision | 1 |
| Date | 2025/04/23 |
| Drawn by | Steve |
| Checked by | |
| A201 | |
| Scale | 1 : 47 |



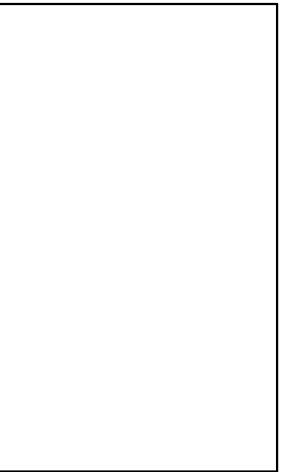
Drawn by Steve Bentley
info@stevebentley.ca
145 Commercial St. Berwick NS
Phone (902) 670-5925
www.stevebentley.ca

General Notes:

All notes, dimensions and site conditions are to be checked and verified by the contractor or builder in charge prior to construction.

All construction shall be carried out in accordance with the current National Building Code of Canada and its authorities having jurisdiction.

Any errors or omissions shall be reported to Steve Bentley prior to construction.



| | |
|------------------|------------|
| Grumme | |
| Farmhouse | |
| Side Elevation | |
| Project Revision | 1 |
| Date | 2025/04/23 |
| Drawn by | Steve |
| Checked by | |
| A202 | |
| Scale | 1 : 45 |

2025-04-24 11:21:02 AM



Drawn by Steve Bentley
info@stevebentley.ca
145 Commercial St. Berwick NS
Phone (902) 670-5925
www.stevebentley.ca

General Notes:

All notes, dimensions and site conditions are to be checked and verified by the contractor or builder in charge prior to construction.

All construction shall be carried out in accordance with the current National Building Code of Canada and its authorities having jurisdiction.

Any errors or omissions shall be reported to Steve Bentley prior to construction.

Grumme

Farmhouse

Side Elevation

Project Revision 1

Date 2025/04/23

Drawn by Steve

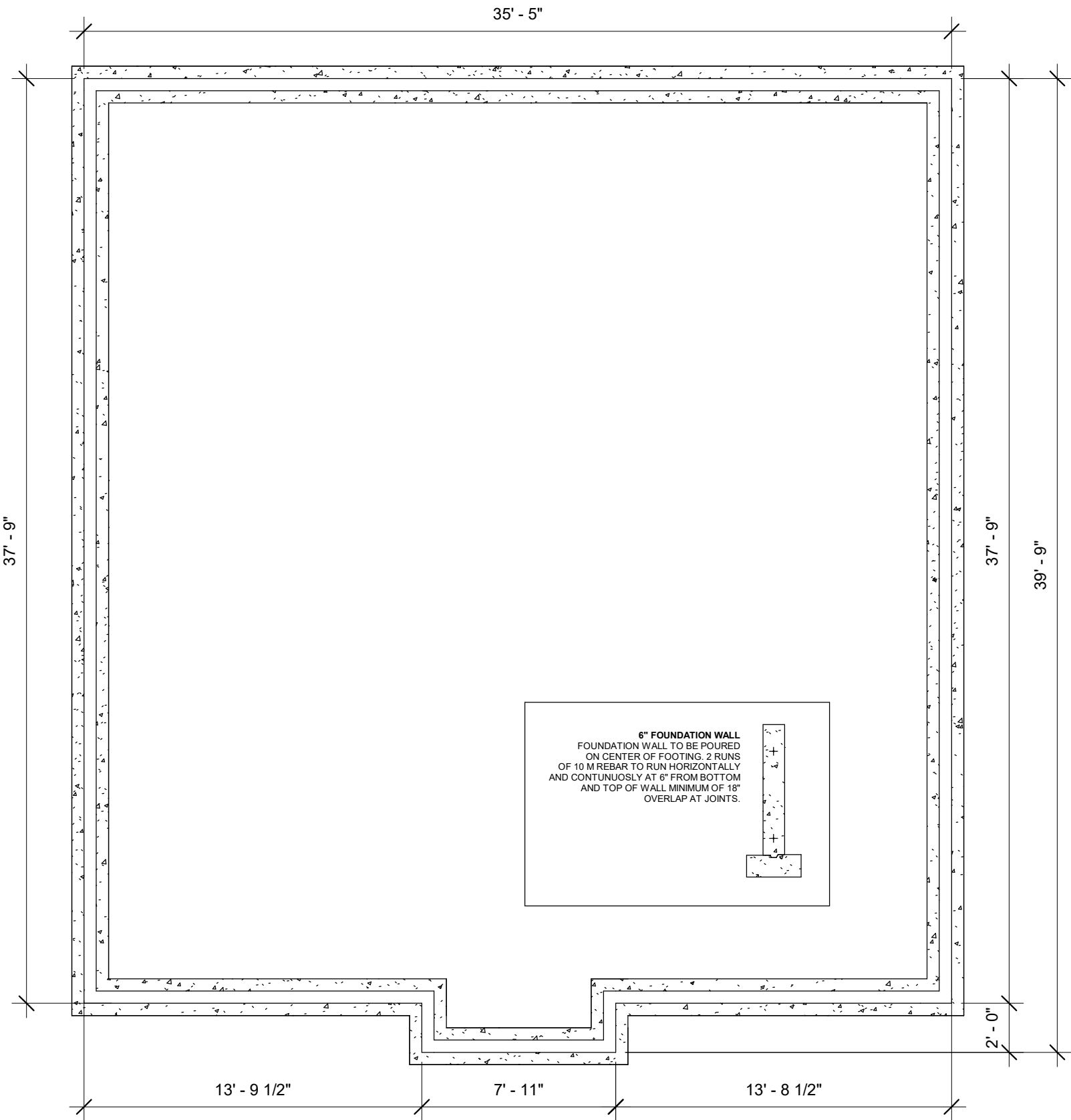
Checked by

A203

Scale 1 : 45

2025-04-24 11:21:03 AM

FOUNDATION PLAN



Drawn by Steve Bentley
info@stevebentley.ca
145 Commercial St. Berwick NS
Phone (902) 670-5925
www.stevebentley.ca

General Notes:

All notes, dimensions and site conditions are to be checked and verified by the contractor or builder in charge prior to construction.

All construction shall be carried out in accordance with the current National Building Code of Canada and its authorities having jurisdiction.

Any errors or omissions shall be reported to Steve Bentley prior to construction.



| | |
|------------------|--------------|
| Grumme | |
| Farmhouse | |
| Foundation | |
| Project Revision | 1 |
| Date | 2025/04/23 |
| Drawn by | Steve |
| Checked by | |
| S100 | |
| Scale | As indicated |