



COUNTY of ANNAPOLIS
NATURALLY ROOTED

Municipal Planning Strategy

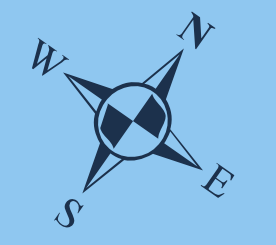
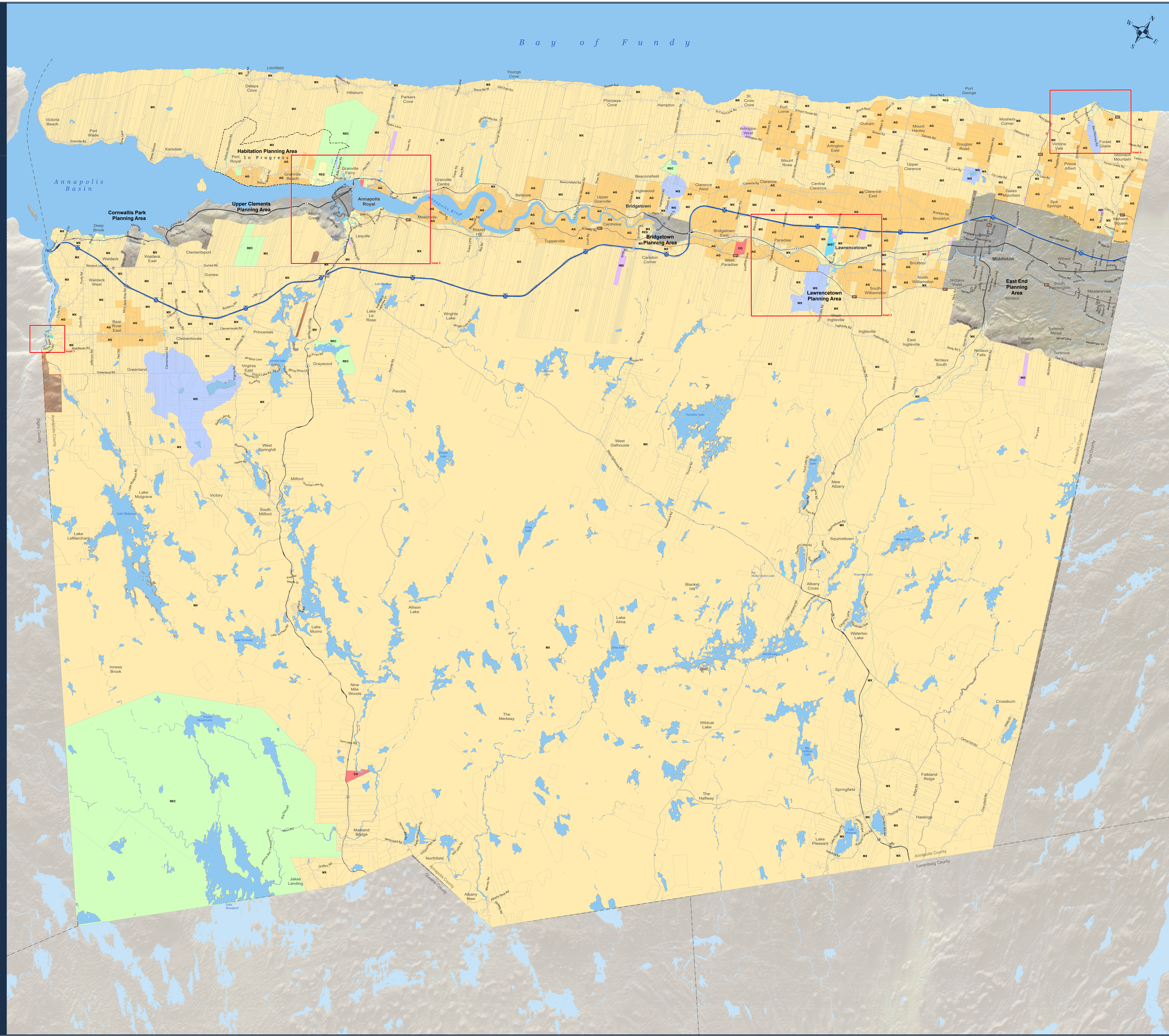
Future Land Use Map Map 1

- Land Use Designations**
- Agricultural (AG)
 - Commercial (CO)
 - Industrial (IND)
 - Institutional (INST)
 - Mixed Use (MX)
 - Recreational (REC)
 - Residential (RES)
 - Water Supply (WS)
 - First Nations
 - Property Boundary
 - Inset Map Boundaries

Municipal Council Approval: January 18, 2024

Effective Date: April 23, 2024

1:75,000



The map data derived from MSTD0, NSPRD, and NSCAF databases is Crown copyright 2023, Province of Nova Scotia. Used by permission of Service Nova Scotia & Municipal Relations License. All rights reserved. Geographic Coordinate System is Universal Transverse Mercator North American Datum 1983 Zone 20.