

Lake Torment is a large lake with a convoluted shoreline and a number of large and small islands. The majority of the lakeshore forms the boundary of the Tobeatic Wilderness Area's "*Finger*", and Wilderness Area regulations apply to these areas. The lake offers an excellent day paddle or overnight experience.

Time: 1 day

Approach: South from Annapolis Royal along Highway 8 to View Lake. Turn right (SOUTH) onto Lake Torment Road. Continue along road approximately 2.3 km, passing Bustin Lake, to the Entry Point at a small cove on the east side of Lake Torment.

Parking: At Entry Point.

Route Classification: Novice

Portage information: No portaging required

Nova Scotia Environment Parks and Protected Areas Branch Website:
<http://novascotia.ca/parksandprotectedareas/>

Or view an interactive map of the Parks and Protected Areas Systems Plan:
<http://www.novascotia.ca/parksandprotectedareas/plan/interactive-map/>

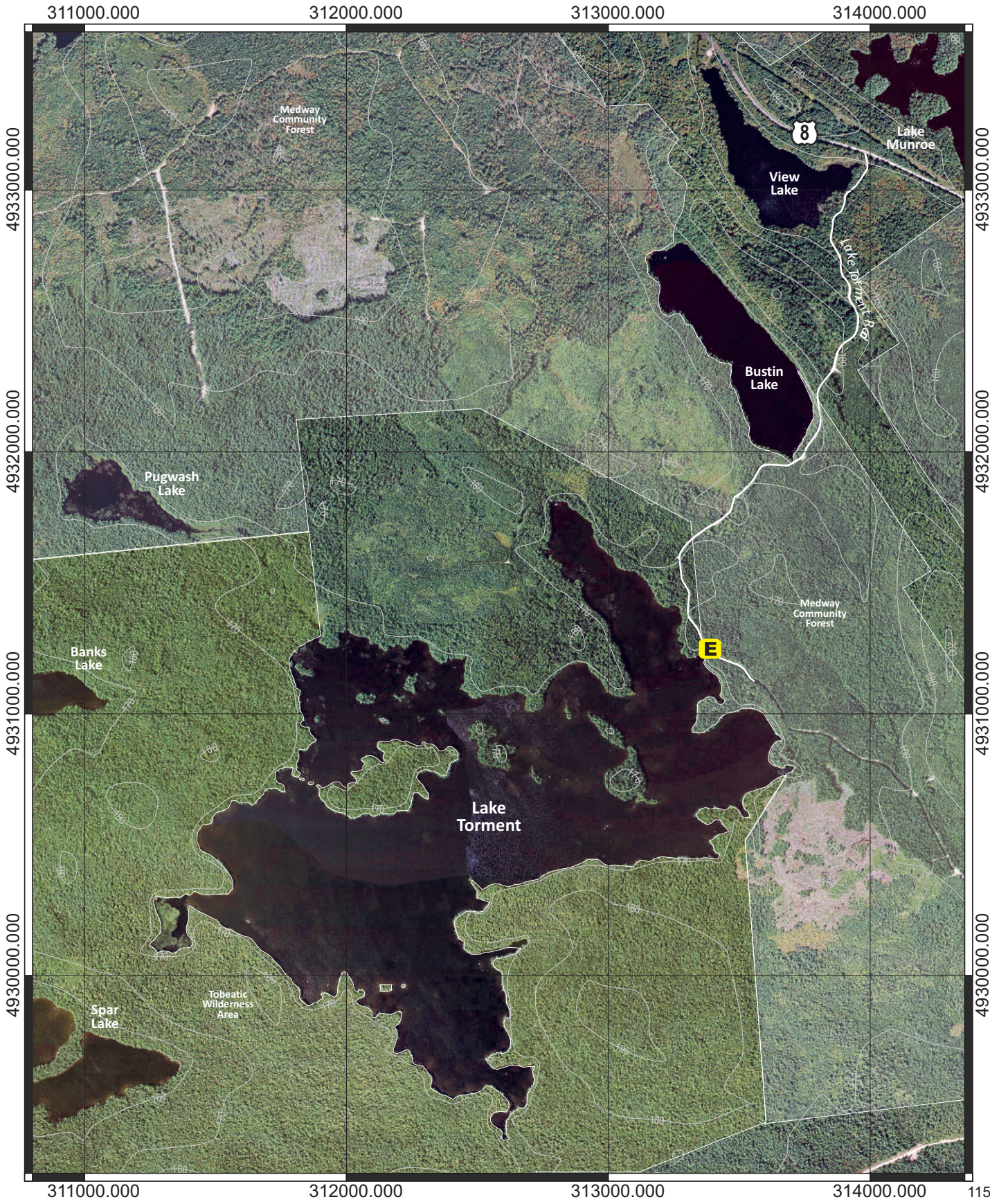
These sites feature information on all of Nova Scotia's National Parks and Wildlife Areas, Wilderness Areas, and Nature Reserves.

Lake Torment



SCALE 0 1000 METRES

Route 26



Disclaimer

The Municipality of the County of Annapolis does not have control over the canoe routes, portages or wilderness tent areas listed in this guide, and therefore assumes no responsibility for the safety of the canoeist paddling the route, walking the portage, or using the wilderness tent areas.

We recommend that users approach all canoe routes and wilderness tent areas in a safe and responsible manner, and conduct visual inspections whenever possible and practical.

Conditions can change through fluctuating water levels, addition of natural debris, and commercial logging activity.

As we are not the owners of any of these lands or routes, any special arrangements must be made directly with the owners and you are accountable to them for any damage, loss or other problems that you may cause.

Although the information in this guide is believed to be accurate, we assume no liability for any errors or omissions that may exist, or for changes that may have occurred on the routes after the publication of this guide.

We recommend, as a supplement to the information herein, that you use Natural Resources Canada 1:50,000 topographical series maps of the general canoe routes.

Annapolis County Recreation Services requests that you read the sections on Safety, Equipment, Trip Planning and Wilderness Ethics before you travel on the lakes and waterways of the region.

Always tell someone where you are going and when you are returning. Please be aware that many portages/canoe carries are not marked.

Map Legend

Entry, Exit Point



Landmark



Portage



River Section



Rapids



Existing Tentsite



Beach



Highway 101, Exit



Public Highway



Highlighted for clarity:



Municipal Boundary



Contour/ Elevation



Grid North



Grid Line



Scale Bar

