

This route is NOT recommended for NOVICE and INTERMEDIATE paddlers

The route is comprised of the East Branch of the Medway River, the Medway River proper, and Port Medway Lake. Although there are a number of stillwaters along the river, the majority of the route is a series of “drop pools” connected by rips, runs and falls. Navigating these sections requires a high level of technical whitewater skills and safety consciousness. Navigability is affected dramatically by water levels, and is generally limited to spring and fall. River canoes equipped with air bags are recommended. Inspection of runs for obstacles and reading of water prior to navigating is also recommended. **The route is recommended for EXPERT paddlers only.**

The river was traditionally used for log driving, and evidence of this activity can be seen in old dams and sluiceways, and runs cleared of rocks. These old dams and sluiceways must be approached with caution, as many iron bolts, spikes and other hardware are imbedded in submerged timbers near them. The river flows through the former Bowater Mersey’s Medway District, now Crown lands, where logging activity may be encountered, and the Medway Lakes Wilderness Area, where vehicle access is restricted.

The area is not developed, and offers the experienced paddler an opportunity for exciting paddling in a remote setting.

Length: 18 km
Time: 2 days

Approach:
Lake Alma: Follow Route 14 from Kelly Bridge on the West Dalhousie Road to the south end of Lake Alma.

Due to its shorter and easier course, it is recommended that this route, rather than the Milford Lakes route, be used as the overland approach to Route 21.

Milford Lakes: Follow Route 4 to Thomas Cove, on east side of First Branch Lake. Follow Route 7 to south end of Lake Alma.

Access to the Medway River via Mersey Road from Albany New is possible, but may be interrupted due to forestry activity.

Entry Point: South end of Lake Alma, at outlet and beginning of Medway River.
Exit Point: Bridge over river at New Albany.

Parking: At Entry Point.
Landmarks:

1. Abandoned tugboat once used to tow log booms
2. Former Bowater Mersey Base Camp, Medway District
3. Main Gate

Route Classification: Expert

Portage Information: Due to the nature of the river route, individual portages are not always identified following the convention used for other routes in this guide. Rather, **sections of the river are described in general**, and are indicated with arrows. Navigability and the need to portage will depend on water levels and the skill of the individual.

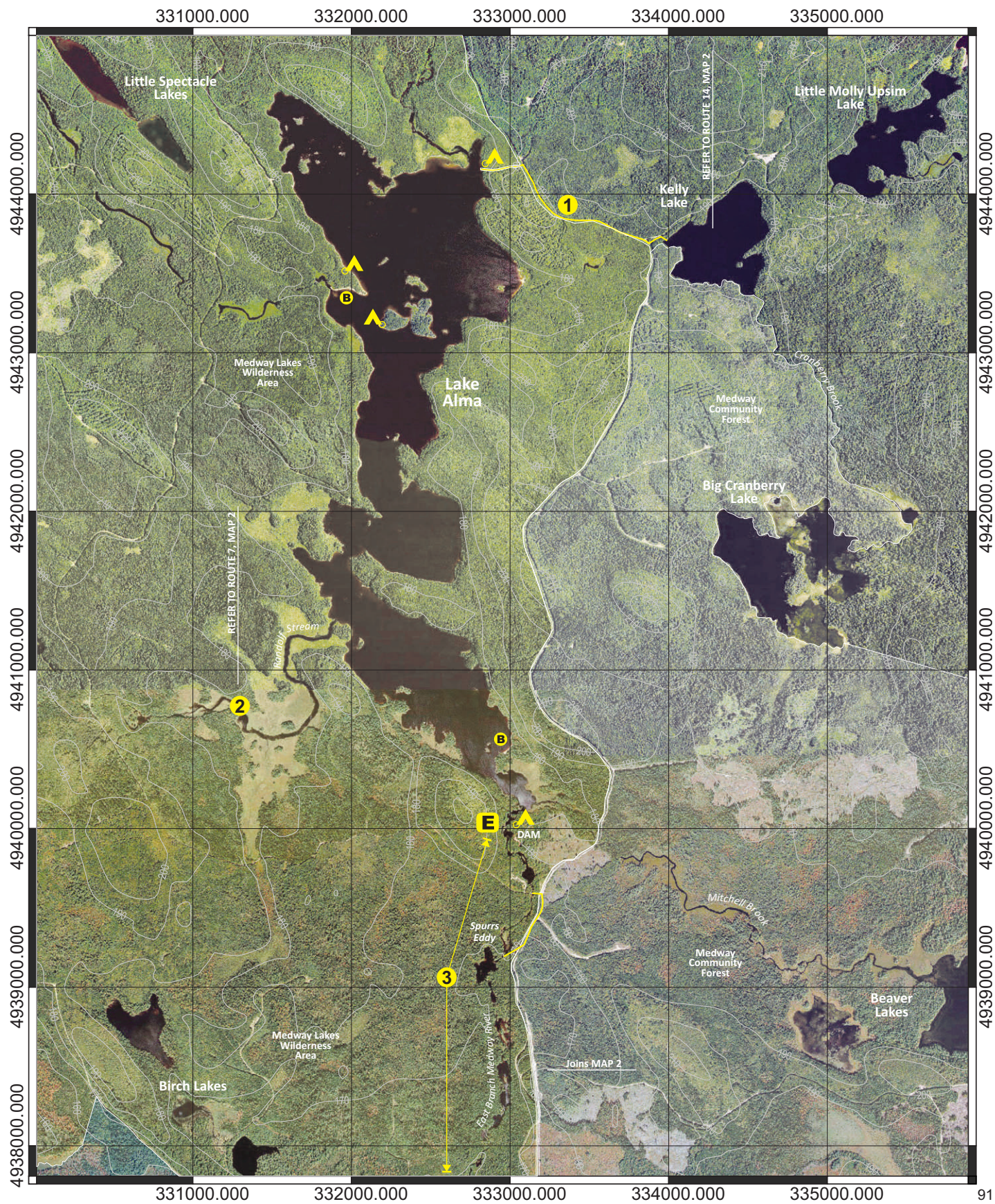
1. 1.4 km Entry, Exit Point to Route 14, Lake Alma.
2. 2.8 km Entry, Exit Point to Route 7, Hendry Lake.
3. 3.0 km Lower volumes of water requiring technical skills. Steep, rocky banks and large boulders in river.
4. Slight current spanned by bridge structure. Easily navigable.
5. 500 m Narrow, steep section. Difficult passage.
6. 500 m On left (EAST) side of outlet. Carry along main access road to gravel pit on right (WEST) side. Turn right through pit and follow foot path to river.
7. 2.0 km Slower moving flat water, interrupted with riffes and runs.
8. 100 m Falls. Difficult passage. Portage on left (SOUTHWEST) side of river. Carry across access road and launch below falls.
9. 3 km Section of drop pools and runs, with a number of falls.
10. 6 km Wider, higher water volume. Long, slower moving sections interrupted by runs and falls.

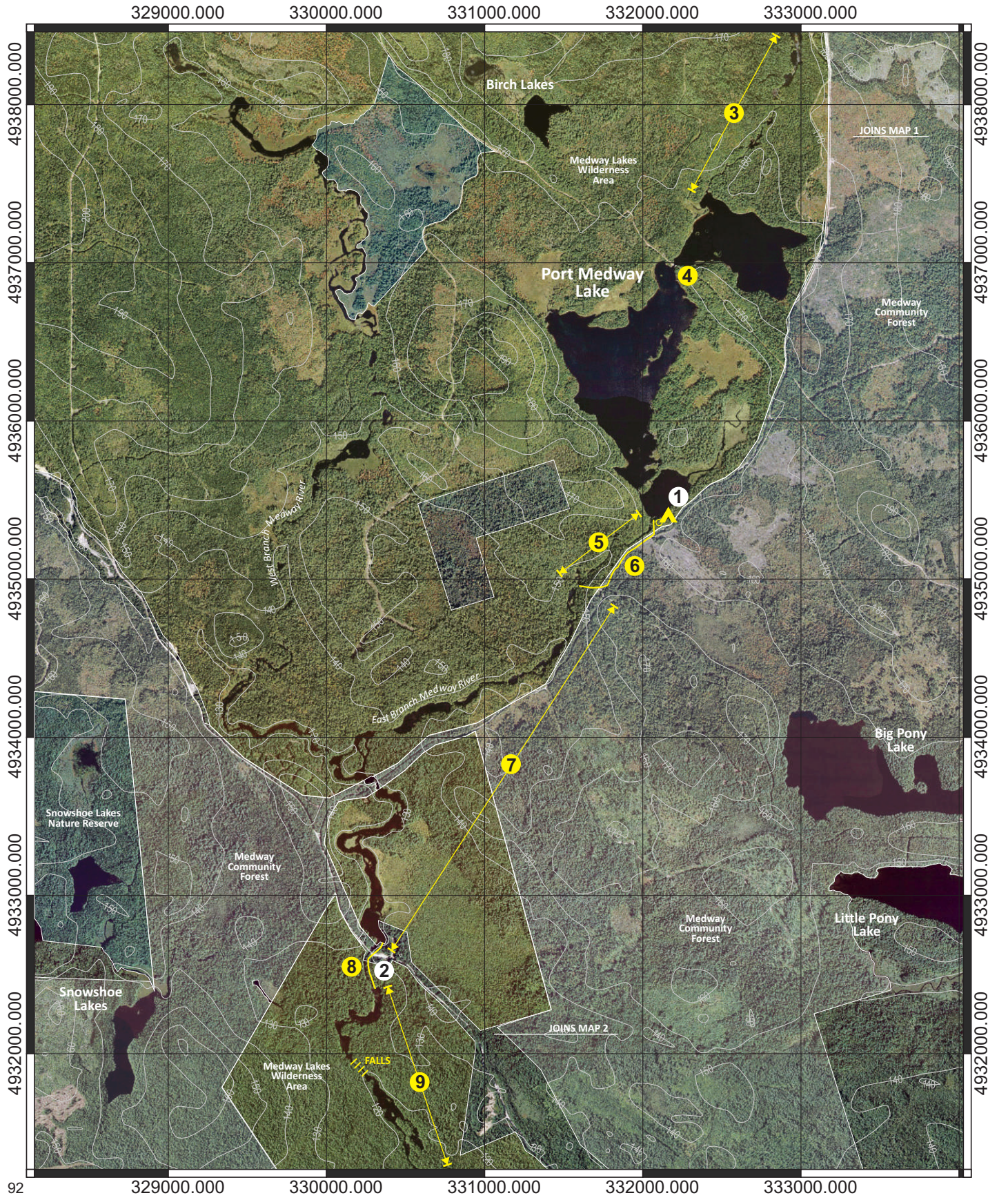
East Branch Medway River



SCALE 0 1000 METRES

Route 21, Map 1



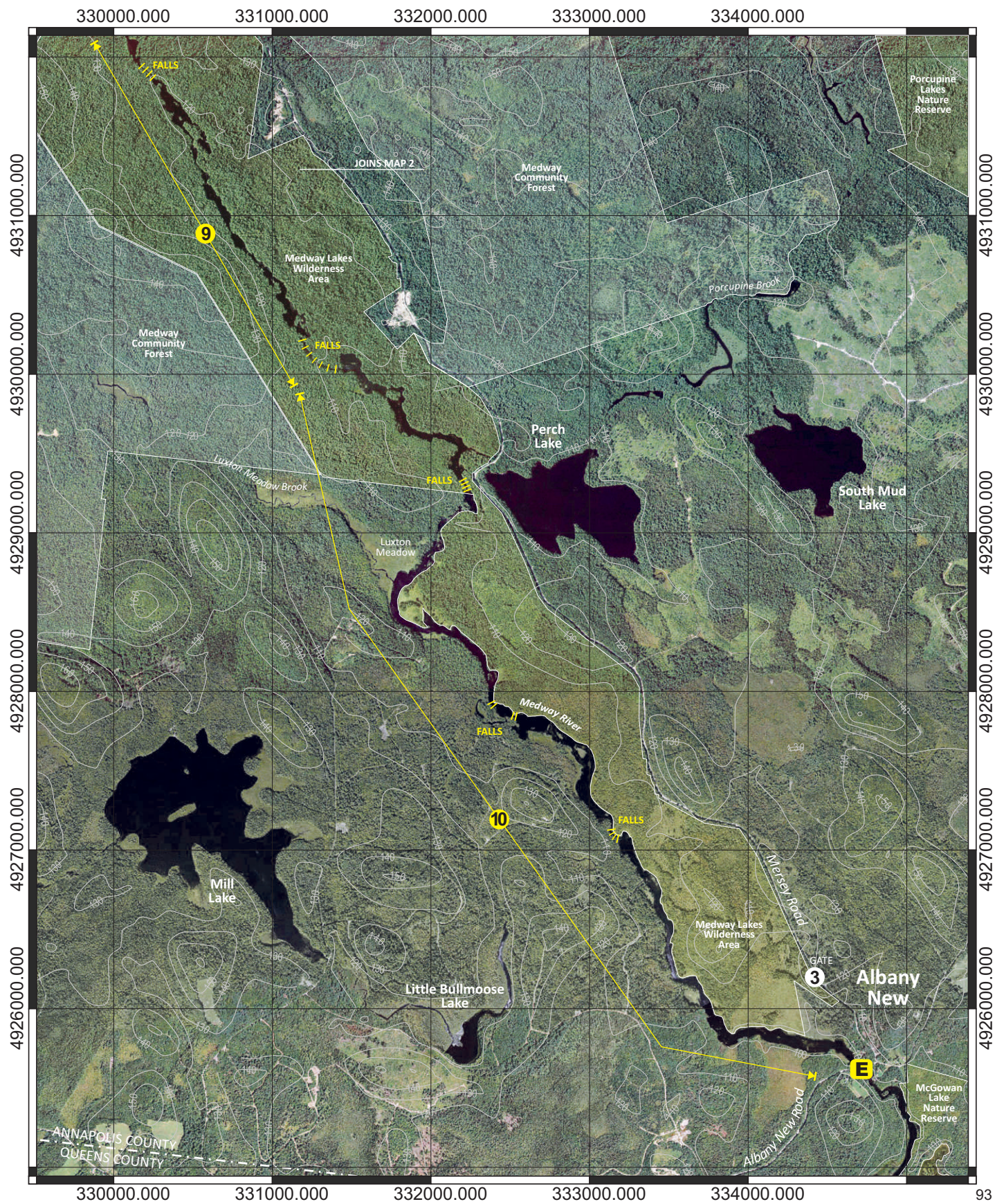


East Branch Medway River



SCALE 0 1000 METRES

Route 21, Map 3



Disclaimer

The Municipality of the County of Annapolis does not have control over the canoe routes, portages or wilderness tent areas listed in this guide, and therefore assumes no responsibility for the safety of the canoeist paddling the route, walking the portage, or using the wilderness tent areas.

We recommend that users approach all canoe routes and wilderness tent areas in a safe and responsible manner, and conduct visual inspections whenever possible and practical.

Conditions can change through fluctuating water levels, addition of natural debris, and commercial logging activity.

As we are not the owners of any of these lands or routes, any special arrangements must be made directly with the owners and you are accountable to them for any damage, loss or other problems that you may cause.

Although the information in this guide is believed to be accurate, we assume no liability for any errors or omissions that may exist, or for changes that may have occurred on the routes after the publication of this guide.

We recommend, as a supplement to the information herein, that you use Natural Resources Canada 1:50,000 topographical series maps of the general canoe routes.

Annapolis County Recreation Services requests that you read the sections on Safety, Equipment, Trip Planning and Wilderness Ethics before you travel on the lakes and waterways of the region.

Always tell someone where you are going and when you are returning. Please be aware that many portages/canoe carries are not marked.

Map Legend

Entry, Exit Point



Landmark



Portage



River Section



Rapids



Existing Tentsite



Beach



Highway 101, Exit



Public Highway



Highlighted for clarity:



Municipal Boundary



Contour/ Elevation



Grid North



Grid Line



Scale Bar

