

Allains River offers a unique experience to the paddler. The route meanders through the Allains River Marsh, an area holding both historical and contemporary significance and dates back to the early 1600's. Adjacent to Fort Anne National Historic Park, this marsh was important to the French settlers, who farmed its upland and salt marshes, and careened their ships on its soft clay. Evidence of their original dykes can still be seen along the route. Struggles between the French and British saw the area change hands many times during the course of history, yet the marsh remained an important agricultural resource well into this century. With many of the Acadian dykes now eroded, most of the marsh has reverted back to its natural tidal state. A portion of the marsh dyke has been reconstructed as part of the Annapolis Royal Historic Gardens.

Due to the tidal nature of this route, the paddler will experience moderate to strong currents and a significant fluctuation in water levels. The soft clay mudflats which are exposed at low tide are difficult to traverse by foot, and **caution must be exercised**. When paddling under the two bridges at Allains River, keep away from bridge abutments, as tidal currents can push and trap your watercraft against them. During the highest tides, reduced clearance under the bridges may prevent passage, so refer to the local tide tables and plan your trip accordingly. At the end of your paddle at Dugway Road, there is a hydroelectric generating plant built in 1967, in the style of a grist mill built by Poutrincourt near this site in 1607. The original mill is recognized as the first grist mill in North America. Although the generating plant is not entirely visible from the water, you may hear it operating.

**Length:** 3 km  
**Time:** 1 day  
**Approach:** West from the traffic lights at Annapolis Royal 200m along Highway No. 1 to the highway bridge at the mouth of Allains River.

**Entry, Exit Point:** On left (south) side of bridge at river bank.

**Parking:** Annapolis Royal: Farmers Market parking lot  
 Allains River: At bridge on Highway 1

**Entry, Exit Point:**  
 Annapolis Royal: Annapolis Royal Wharf and Haul Up  
 Allains River: Bridge, Highway 1

**Landmarks:**

1. Annapolis Royal Inn
2. Bowe's Garage
3. Charlie's Place Restaurant
4. Traffic lights
5. Fort Anne National Historic Site
6. Annapolis Royal Commercial District
7. Annapolis Royal Historic Gardens
8. Annapolis Community Health Centre
9. Lequille Country Store
10. Grist Mill - Nova Scotia Power hydroelectric generating plant
11. Annapolis Royal Golf Club and Restaurant
12. Annapolis Royal Wharf and Haul Up

**Route Classification:** Novice

**Portage Information:** No portaging required.



301000.000

302000.000

4958000.000

4958000.000

4957000.000

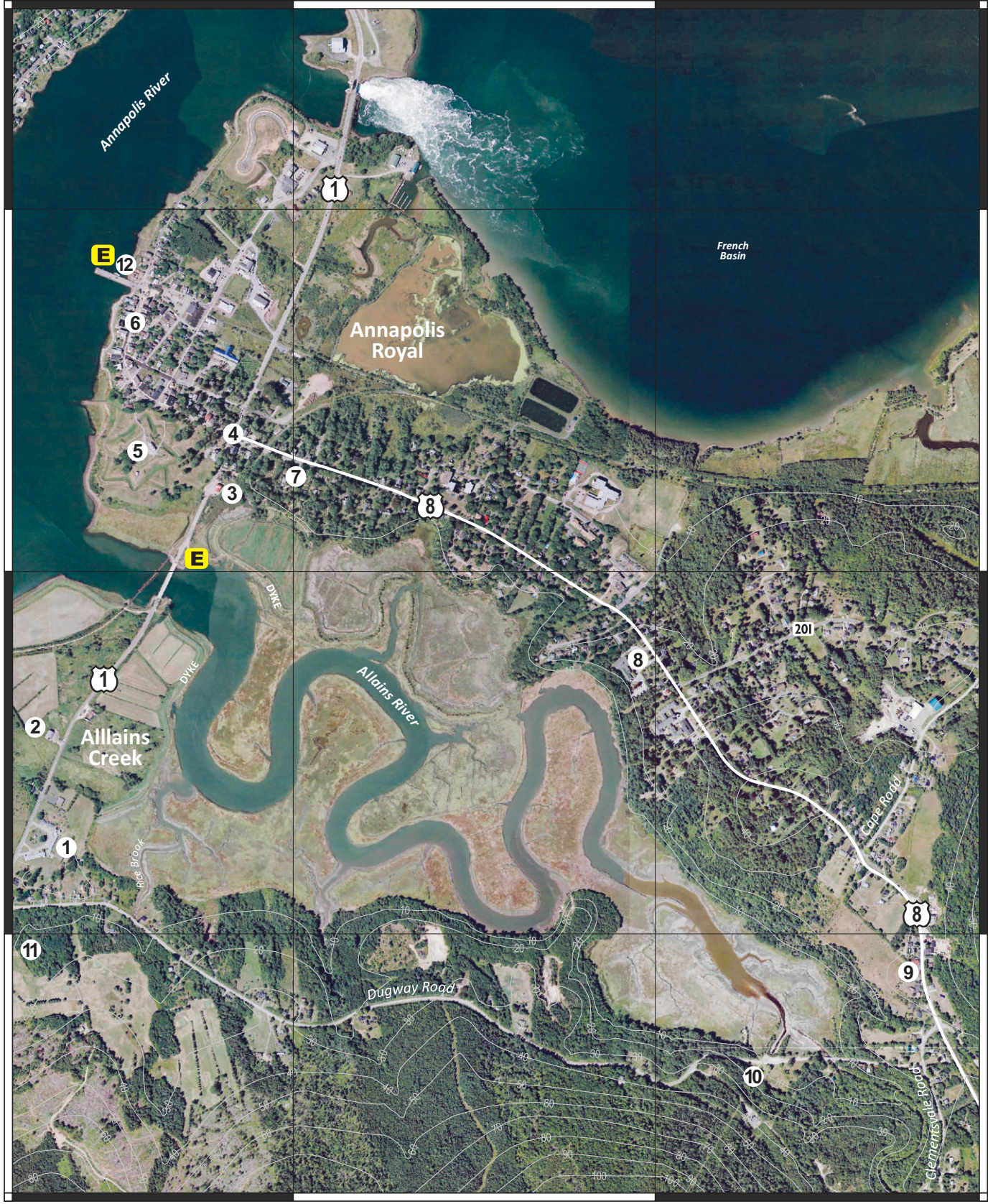
4957000.000

4956000.000

4956000.000

301000.000

302000.000





# Disclaimer

The Municipality of the County of Annapolis does not have control over the canoe routes, portages or wilderness tent areas listed in this guide, and therefore assumes no responsibility for the safety of the canoeist paddling the route, walking the portage, or using the wilderness tent areas.

We recommend that users approach all canoe routes and wilderness tent areas in a safe and responsible manner, and conduct visual inspections whenever possible and practical.

Conditions can change through fluctuating water levels, addition of natural debris, and commercial logging activity.

As we are not the owners of any of these lands or routes, any special arrangements must be made directly with the owners and you are accountable to them for any damage, loss or other problems that you may cause.

Although the information in this guide is believed to be accurate, we assume no liability for any errors or omissions that may exist, or for changes that may have occurred on the routes after the publication of this guide.

We recommend, as a supplement to the information herein, that you use Natural Resources Canada 1:50,000 topographical series maps of the general canoe routes.

Annapolis County Recreation Services requests that you read the sections on Safety, Equipment, Trip Planning and Wilderness Ethics before you travel on the lakes and waterways of the region.

Always tell someone where you are going and when you are returning. Please be aware that many portages/canoe carries are not marked.

## Map Legend

Entry, Exit Point



Landmark



Portage



River Section



Rapids



Existing Tentsite



Beach



Highway 101, Exit



Public Highway



Highlighted for clarity:



Municipal Boundary



Contour/ Elevation



Grid North



Grid Line



Scale Bar

