

The route follows the Annapolis River from Kingston to Annapolis Royal, beginning as a shallow, meandering stream flowing through forested areas. As it proceeds westward, it becomes both wider and deeper, flowing through rich cultivated farmland. The river is generally flat, moving water with low to moderate wind exposure with no portages. However, fallen trees and other debris can obstruct a waterway. Caution is advised in the spring and after intense storms. A pipe across the river west of the highway bridge in Lawrencetown may present an obstruction during very low water levels.

Although the route passes through developed and intensively farmed areas, the perspective from the river is surprisingly of remoteness and solitude, and offers a reasonably safe, enjoyable paddle throughout its length. The river may be entered and exited at a number of points, allowing the paddler to experience as little or as much of the route as time allows. A complete traverse of the route from Kingston to Annapolis Royal will require overnight stops on the river, but many day trip opportunities can be enjoyed as well.

The river is relatively narrow and protected from wind between Kingston and Bridgetown. The river between Bridgetown and Annapolis Royal widens dramatically, and is prone to strong winds. This section is more appropriately suited to kayaking and sailing, but is an excellent paddle by canoe with appropriate attention to wind and weather.

West of Paradise, the river becomes tidal, and water levels and currents will fluctuate. This section, where salt and fresh water meet, is referred to as “estuarine”, and is one of the reasons the Annapolis River is so well known for its variety of fishing opportunities - bass, salmon, trout, smelt, mackerel and many others depending on the season and location along the river. Clean Annapolis River Project is a non-profit organization dedicated to the ongoing stewardship and protection of the river habitat. In 2015, they held their first annual Annapolis River Festival.

It is very important when launching from, or approaching the causeway at Annapolis Royal, to avoid the two Nova Scotia Power control gates. There are floating booms across the approaches to the gates. The gates control the flow of water between the Annapolis (west side of the causeway) and French Basins (east side of the causeway), and water flows are strong, turbulent, and pose a serious hazard to small craft. Refer to Landmark 9 and 10, Map 10.

Length:	Kingston to Middleton:	16.9 km
	Middleton to Lawrencetown:	13.5 km
	Lawrencetown to Bridgetown:	15.7 km
	Total:	46.1 km
	Bridgetown to Annapolis Royal:	33.8 km
	Total:	79.9 km
Time:	2 days	
Approach:	South from Highway No. 1 at Kingston, 1.1 km along Bridge Street, Kingston, Kings County to bridge at the Annapolis River. Located a short distance south of the Stronach Park Family Fitness Trail.	

Entry, Exit Points

Bridge Street, Kingston:	Right (WEST) on short road near bridge.
South Farmington:	Located in Old Mill Subdivision at the end on Adam Drive is Old Mill Trail. This park is owned by the County of Annapolis. Entry to the Annapolis River is possible here with a small carry to the river. Parking is available.
Wilmot:	South from Highway 1, 600m along Old Mill Road to bridge.
Nictaux East:	South from Highway 1, 700m along Bayard Road to bridge.

Middleton:	South from Highway 1, 600m along Bridge Street, to Riverside Park at north end of bridge at river. Parking is available at Middleton Riverside Park which is owned by the Town of Middleton.
Brickton:	South from Highway 1, 200m along Mount Hanley Road to bridge.
Lawrencetown:	South from Highway No. 1, 75m along Lawrencetown Lane to bridge.
Paradise:	There is a small park on the north side of the river and east of the highway bridge called Lawrencetown River Access Park. This park, bordering the river is owned and managed by the Lawrencetown Village Commission.
Bridgetown:	South from Highway 1, 250m along Paradise Lane to bridge.
Upper Granville:	Queen Elizabeth II Jubilee Park. The park has a boat launch and the site of the Visitor Information Centre. This park is owned by the County of Annapolis
Round Hill:	Hebb's Landing Park and Boat Launch. This park is owned by the County of Annapolis.
Granville Ferry:	Launch at the Wharf Road.
Annapolis Royal:	Dunromin Campsite beach (please ask permission as there may be a fee), Granville Ferry.
	Launch on east side of Causeway (Highway 1).

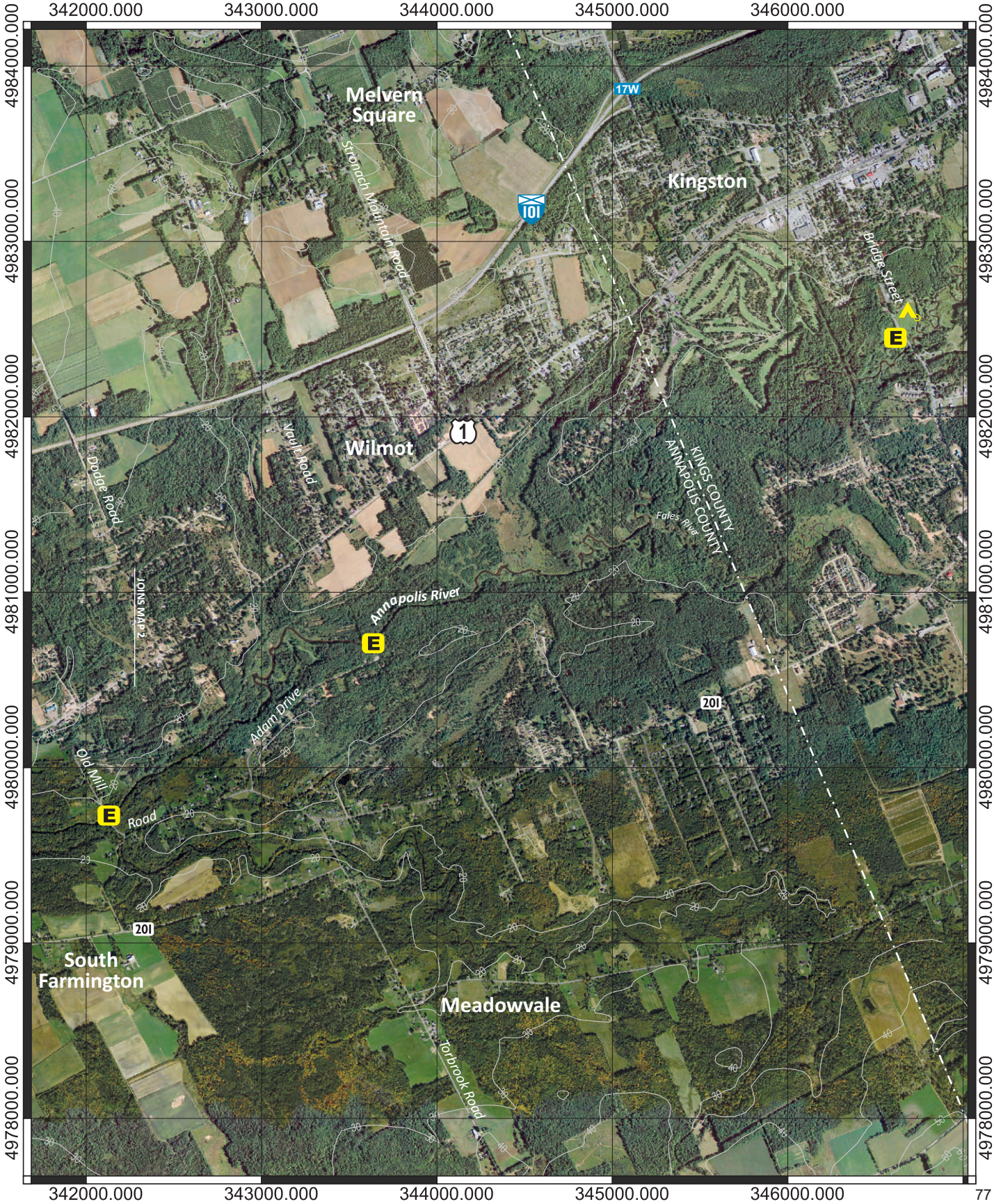
Parking: Available at Entry, Exit Points. At most bridges crossing the Annapolis River, there are areas where people have historically launched their boats. Some include a small road to the water with informal parking (they are not maintained) and/or a pathway to the river which requires parking on the side of the road. Please exercise caution. Parking is available at the parks identified on the maps.

Landmarks:

1. Vidito Family Campground and Cottages
2. Riverside Park, Middleton
3. Lawrencetown River Access Park
4. Eden Golf Course (located along the 201 on the south side of the river)
5. Annapolis River Campground
6. Queen Elizabeth II Jubilee Park
7. Hebb's Landing Park and Boat launch
8. Dunromin Campground
9. Nova Scotia Power Tidal Power Control Gates
10. Nova Scotia Power Tidal Power Plant and Tourist Information Centre

Route Classification: Intermediate.

Portage Information: No portaging required.



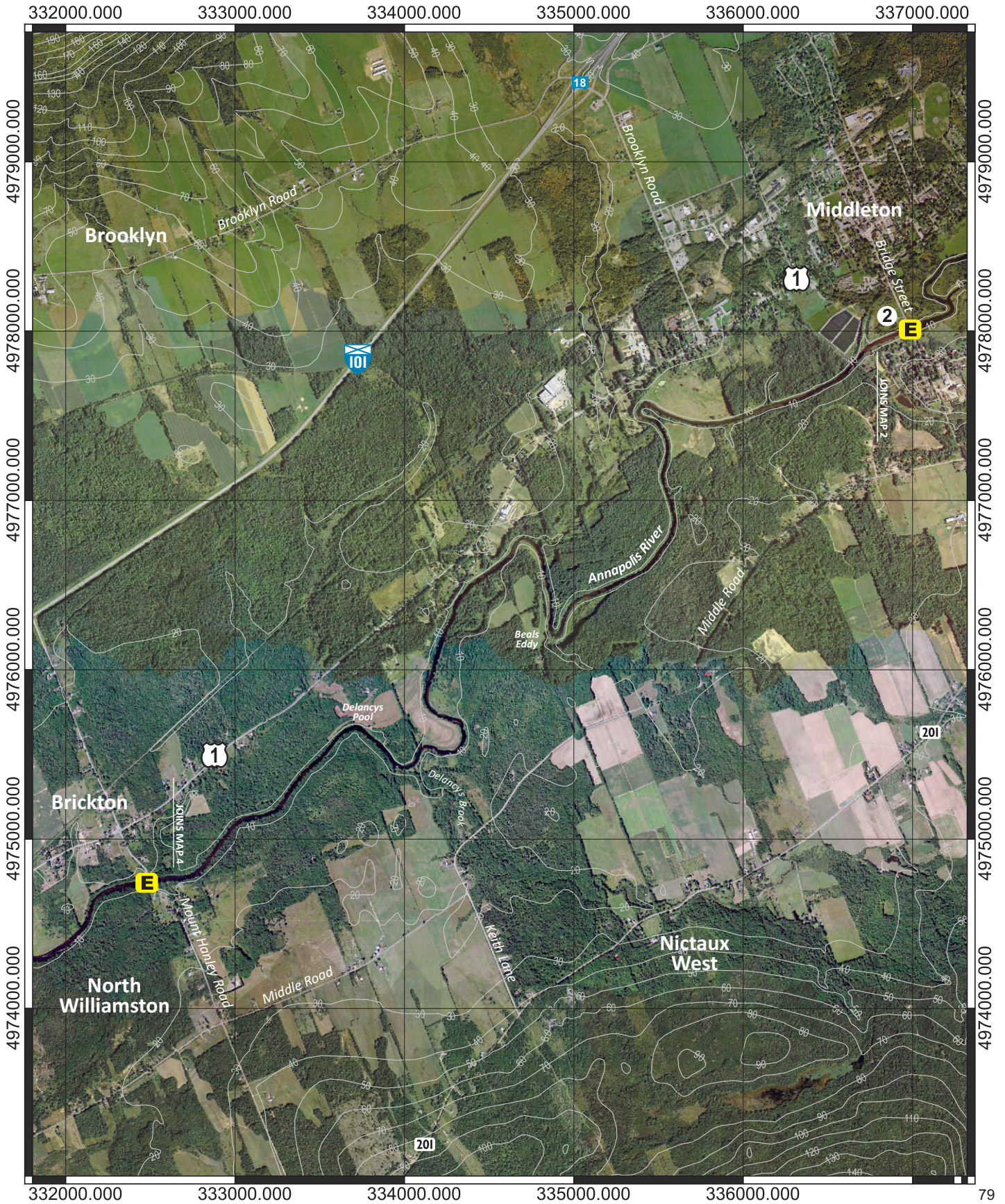


Annapolis River



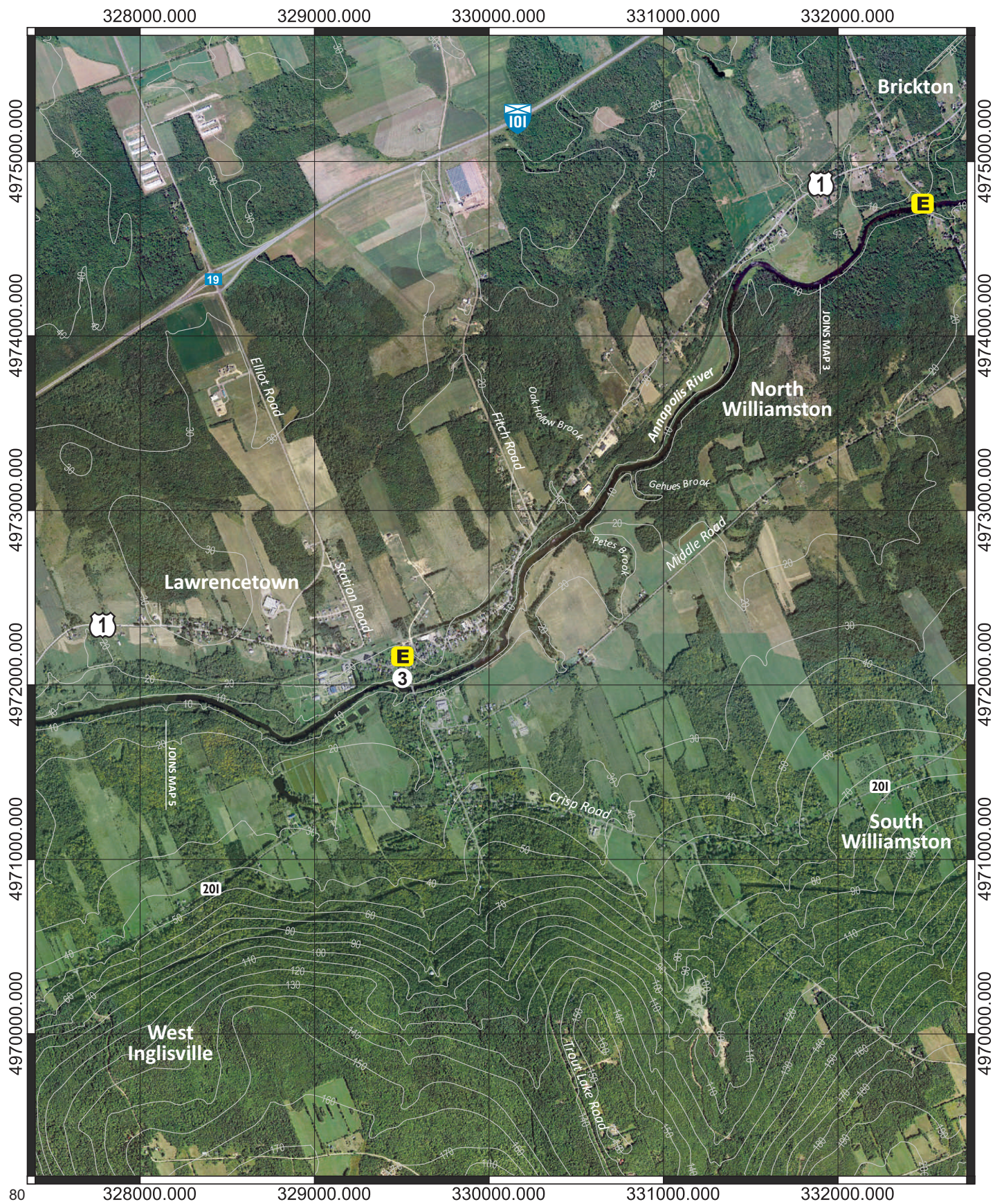
SCALE 0 1000 METRES

Route 19, Map 3



0 1000
SCALE METRES

Route 19, Map 4

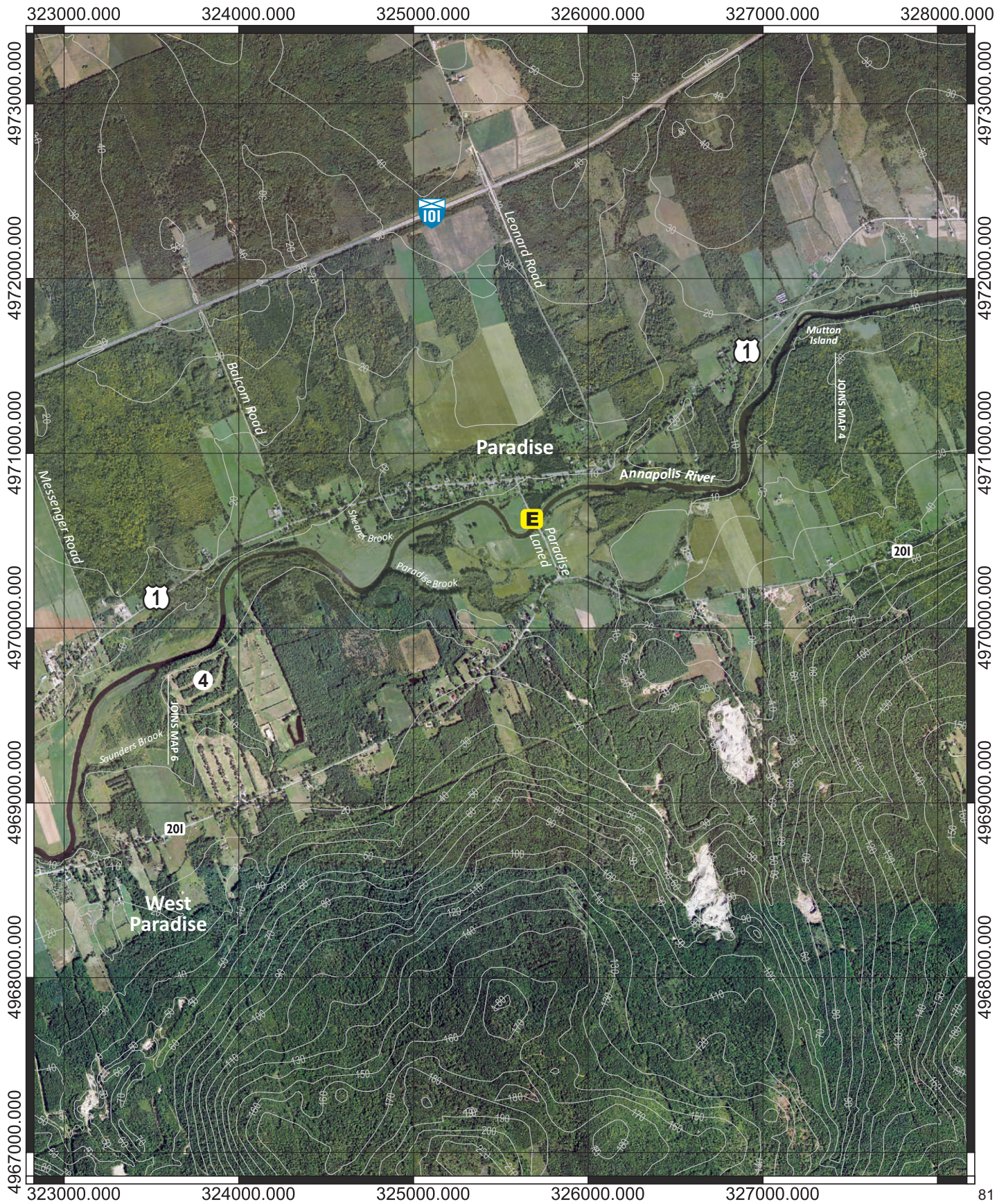


Annapolis River



SCALE 0 1000 METRES

Route 19, Map 5

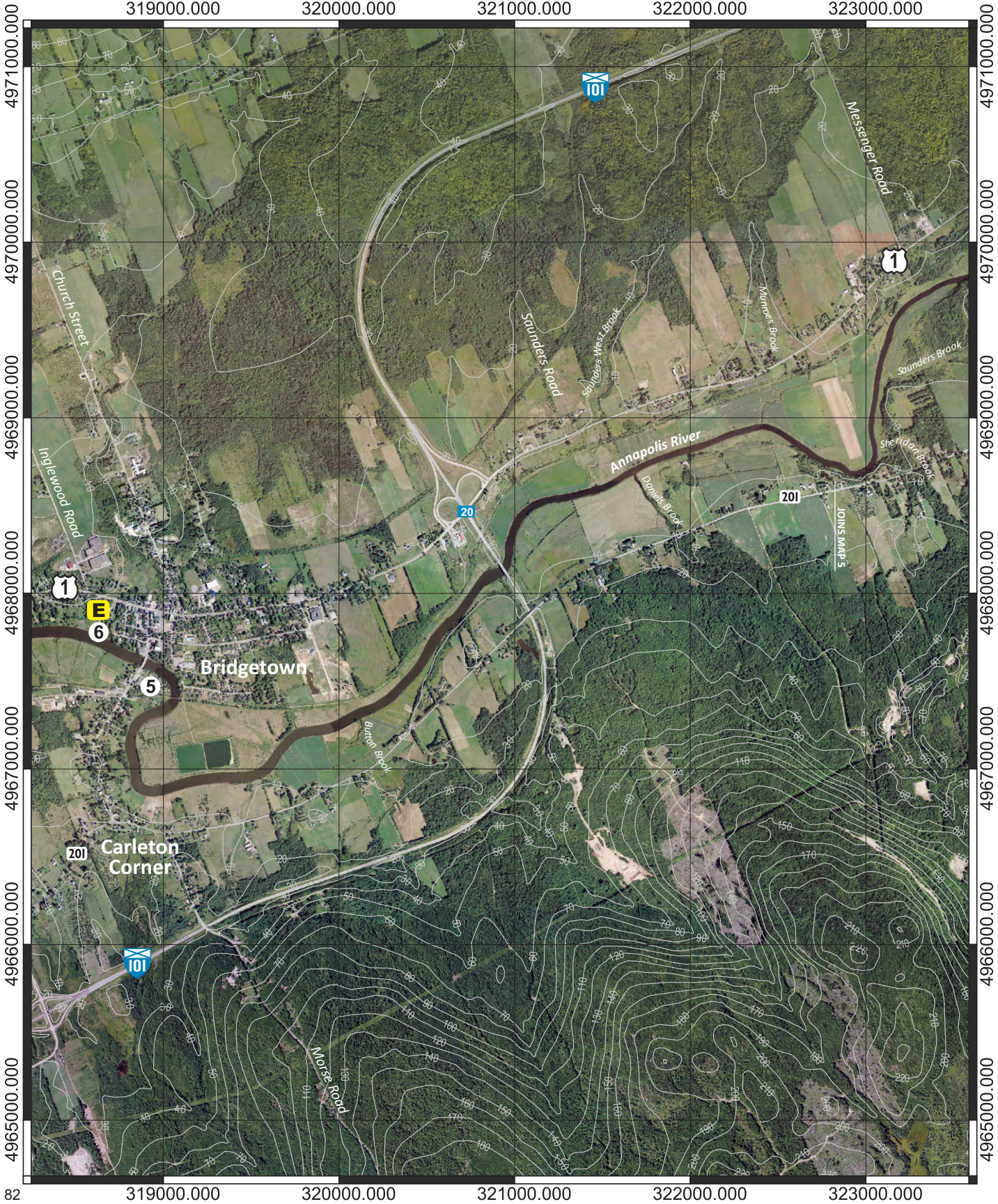


Annapolis River



SCALE 0 1000 METRES

Route 19, Map 6

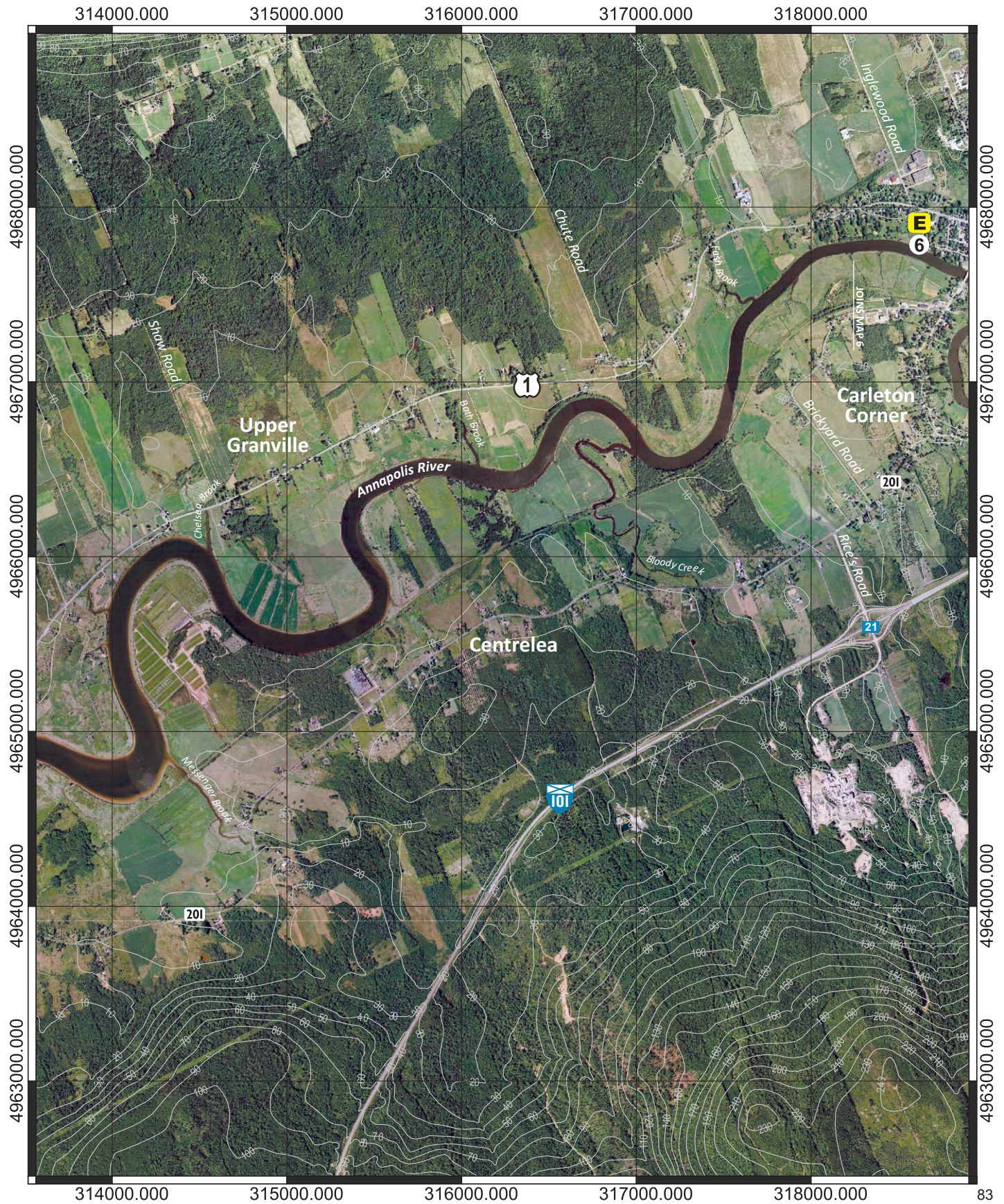


Annapolis River



SCALE 0 1000 METRES

Route 19, Map 7



Annapolis River



SCALE 0 1000 METRES

Route 19, Map 8



Annapolis River



SCALE 0 1000 METRES

Route 19, Map 9



Annapolis River



SCALE 0 1000 METRES

Route 19, Map 10



Disclaimer

The Municipality of the County of Annapolis does not have control over the canoe routes, portages or wilderness tent areas listed in this guide, and therefore assumes no responsibility for the safety of the canoeist paddling the route, walking the portage, or using the wilderness tent areas.

We recommend that users approach all canoe routes and wilderness tent areas in a safe and responsible manner, and conduct visual inspections whenever possible and practical.

Conditions can change through fluctuating water levels, addition of natural debris, and commercial logging activity.

As we are not the owners of any of these lands or routes, any special arrangements must be made directly with the owners and you are accountable to them for any damage, loss or other problems that you may cause.

Although the information in this guide is believed to be accurate, we assume no liability for any errors or omissions that may exist, or for changes that may have occurred on the routes after the publication of this guide.

We recommend, as a supplement to the information herein, that you use Natural Resources Canada 1:50,000 topographical series maps of the general canoe routes.

Annapolis County Recreation Services requests that you read the sections on Safety, Equipment, Trip Planning and Wilderness Ethics before you travel on the lakes and waterways of the region.

Always tell someone where you are going and when you are returning. Please be aware that many portages/canoe carries are not marked.

Map Legend

Entry, Exit Point



Landmark



Portage



River Section



Rapids



Existing Tentsite



Beach



Highway 101, Exit



Public Highway



Highlighted for clarity:



Municipal Boundary



Contour/ Elevation



Grid North



Grid Line



Scale Bar

